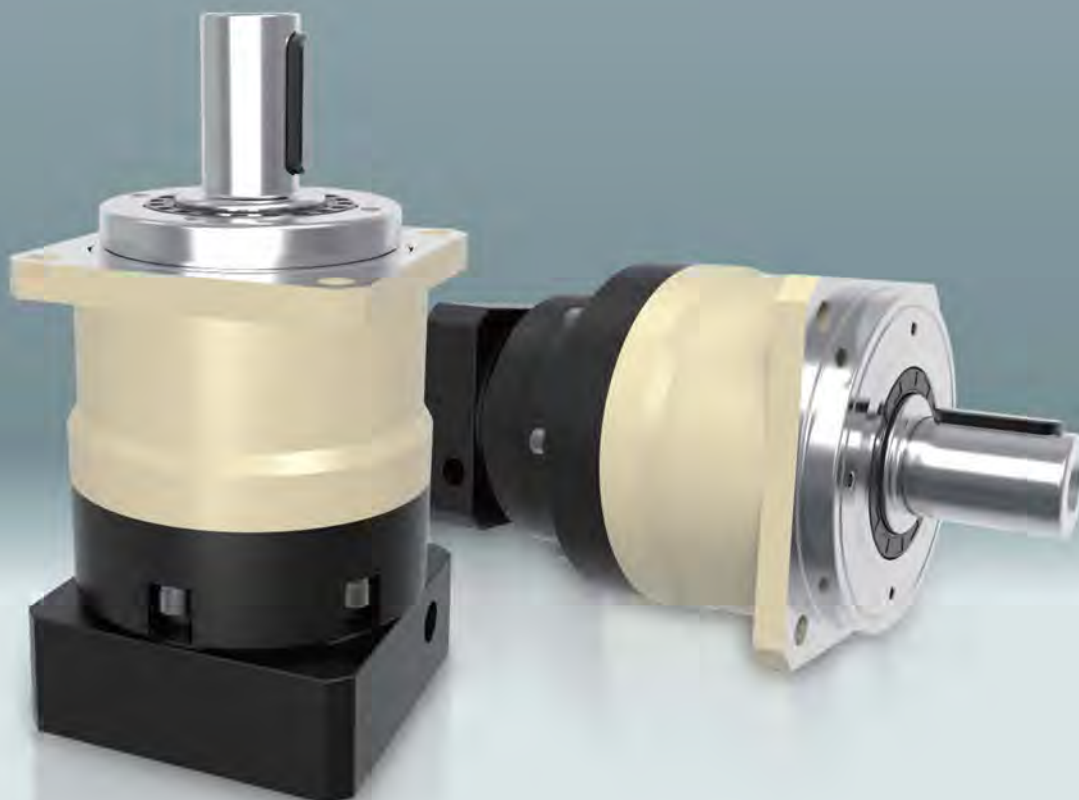


# MYB SERIES

精密行星减速机



## 型号说明 MODEL ILLUMINATE

MYB090

-

10

-

S2

-

马达

减速机型式：

MYB042/MYB060/MYB090/MYB115  
MYB142/MYB180/MYB220

输出轴型式选择：S1：平滑直轴  
S2：附键直轴

马达型号：  
马达制造及型号

减速比：单级(L1)：3,4,5,6,7,8,10  
双级(L2)：12,15,20,25,30,35,40,50,60,70,80,100

选型范例：MYB090-10-S2-P2/MHMD-082G1U

### 性能 -MYB 减速机

规格	级数	减速比 <sup>1</sup>	MYB042	MYB060	MYB090	MYB115	MYB142	MYB180	MYB220	
额定输出力矩 $T_{2M}$	1	3	20	55	130	208	342	588	1,140	
		4	19	50	140	290	542	1,050	1,700	
		5	22	60	160	330	650	1,200	2,000	
		6	20	55	150	310	600	-	-	
		7	19	50	140	300	550	1,100	1,800	
		8	17	45	120	260	500	1,000	1,600	
		10	14	40	100	230	450	520	1,220	
		12	20	55	130	208	342	-	-	
		15	20	55	130	208	342	588	1,140	
		20	19	50	140	290	542	1,050	1,700	
	2	25	22	60	160	330	650	1,200	2,000	
		30	22	50	130	208	342	1,200	2,000	
		35	22	60	160	330	650	1,200	2,000	
		40	22	50	140	290	542	1,200	2,000	
		50	22	60	160	330	650	1,200	2,000	
		60	20	55	150	310	600	-	-	
		70	19	50	140	300	550	1,100	1,800	
		80	17	45	120	260	500	1,000	1,600	
100	14	40	100	230	450	520	1,220			
最大输出力矩 $T_{2S}$	Nm	1,2	3倍额定输出力矩							
额定输入转速 $n_1$	rpm	1,2	3~100	5,000	5,000	4,000	4,000	3,000	3,000	2,000
最大输入转速 $n_{1S}$	rpm	1,2	3~100	10,000	10,000	8,000	8,000	6,000	6,000	4,000
背隙	arcmin	1	3~10	≤5	≤5	≤5	≤5	≤5	≤5	≤5
		2	12~100	≤7	≤7	≤7	≤7	≤7	≤7	≤7
扭转刚性	Nm/arcmin	1,2	3~100	3	7	14	25	50	145	225
容许径向力 $F_{2R}^2$	N	1,2	3~100	780	1,530	3,250	6,700	9,400	14,500	50,000
容许轴向力 $F_{2A10}^2$	N	1,2	3~100	350	630	1,300	3,000	4,000	6,200	35,000
容许轴向力 $F_{2A20}^2$	N	1,2	3~100	390	765	1,625	3,350	4,700	7,250	25,000
使用寿命	hr	1,2	3~100	20,000*						
效率 $\eta$	%	1	3~10	≥97%						
		2	12~100	≥94%						
重量	kg	1	3~10	0.5	1.3	3.7	7.8	14.5	29	48
		2	12~100	0.8	1.9	4.1	9	17.5	33	60
使用温度	°C	1,2	3~100	-10°C~+90°C						
润滑		1,2	3~100	合成润滑油脂						
防护等级		1,2	3~100	IP65						
安装方向		1,2	3~100	任意方向						
噪音值 ( $n_1=3000\text{rpm}$ )	dB	1,2	3~100	≤56	≤58	≤60	≤63	≤65	≤67	≤70

### 惯量 -MYB 减速机

规格	级数	减速比 <sup>1</sup>	MYB042	MYB060	MYB090	MYB115	MYB142	MYB180	MYB220
转动惯量 $J_1$	1	3	0.03	0.16	0.61	3.25	9.21	28.98	69.61
		4	0.03	0.14	0.48	2.74	7.54	23.67	54.37
		5	0.03	0.13	0.47	2.71	7.42	23.29	53.27
		6	0.03	0.13	0.45	2.65	7.25	22.75	51.72
		7	0.03	0.13	0.45	2.62	7.14	22.48	50.97
		8	0.03	0.13	0.44	2.58	7.07	22.59	50.84
		10	0.03	0.13	0.44	2.57	7.03	22.51	50.56
		12	0.03	0.03	0.13	0.47	2.71	7.42	23.29
		15	0.03	0.03	0.13	0.47	2.71	7.42	23.29
		20	0.03	0.03	0.13	0.47	2.71	7.42	23.29
	2	25	0.03	0.03	0.13	0.47	2.71	7.42	23.29
		30	0.03	0.03	0.13	0.47	2.71	7.42	23.29
		35	0.03	0.03	0.13	0.47	2.71	7.42	23.29
		40	0.03	0.03	0.13	0.47	2.71	7.42	23.29
		50	0.03	0.03	0.13	0.44	2.57	7.03	22.51
		60	0.03	0.03	0.13	0.44	2.57	7.03	22.51
		70	0.03	0.03	0.13	0.44	2.57	7.03	22.51
		80	0.03	0.03	0.13	0.44	2.57	7.03	22.51
100	0.03	0.03	0.13	0.44	2.57	7.03	22.51		

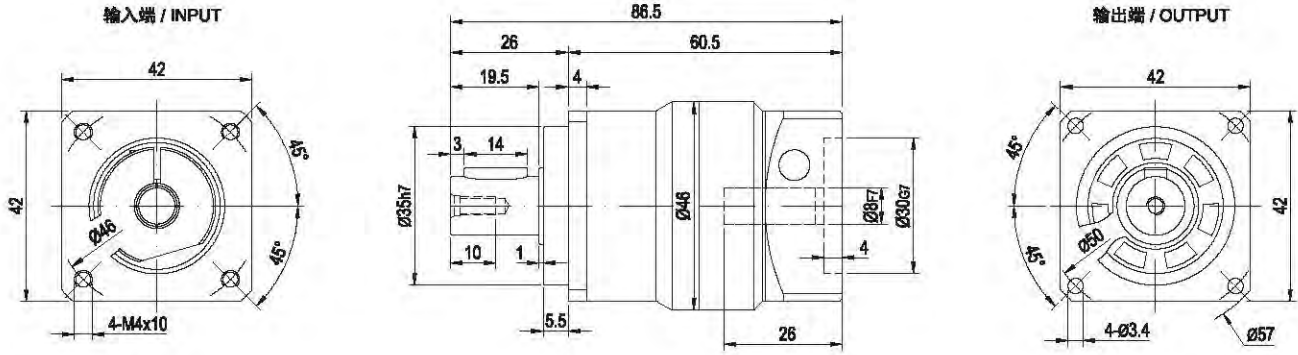
1. 减速比 ( $i=N_{in}/N_{out}$ )

\* 连续运转降低使用寿命二分之一。

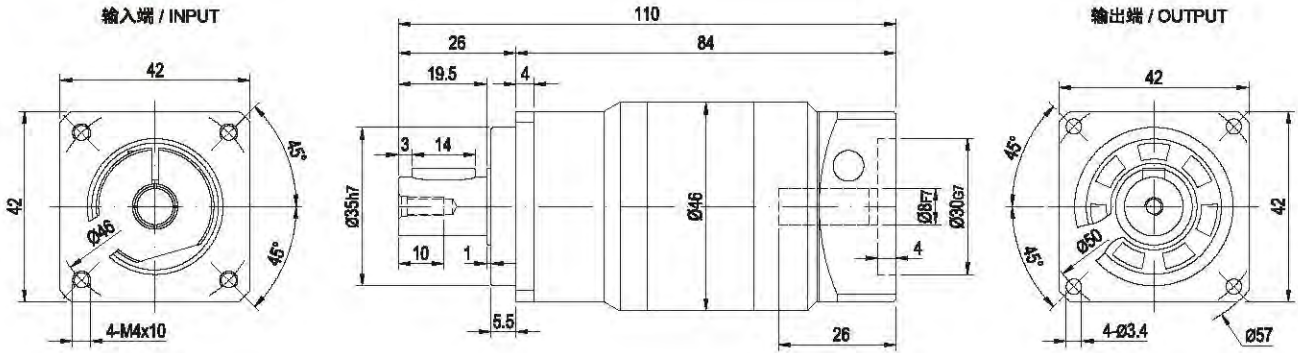
2. 输出转速 100rpm 时, 作用于输出轴中心位置。

外形尺寸图 / OUTLINE DIMENSION SHEET

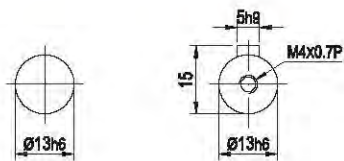
MYB-042-L1



MYB-042-L2



输出轴径 / Output Diameter



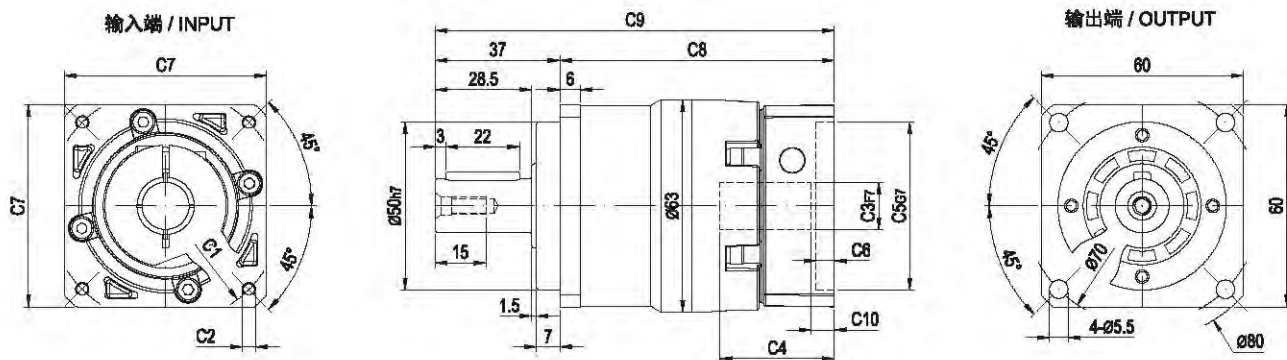
轴型式 S1

轴型式 S2

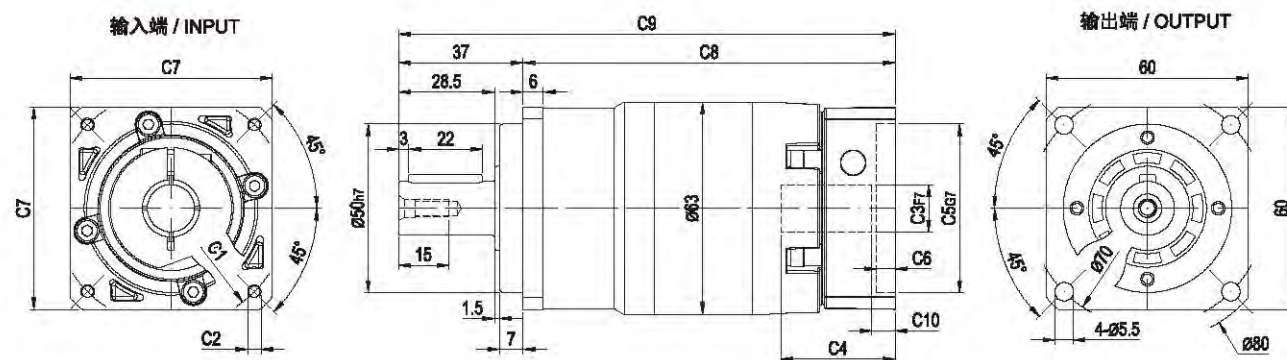
\* 输入马达连接板之尺寸,可根据客户要求单独定做。  
 \* The Input motor specific dimensions could be customised.

外形尺寸图 / OUTLINE DIMENSION SHEET

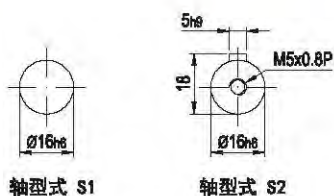
MYB-060-L1



MYB-060-L2



输出轴径 / Output Diameter

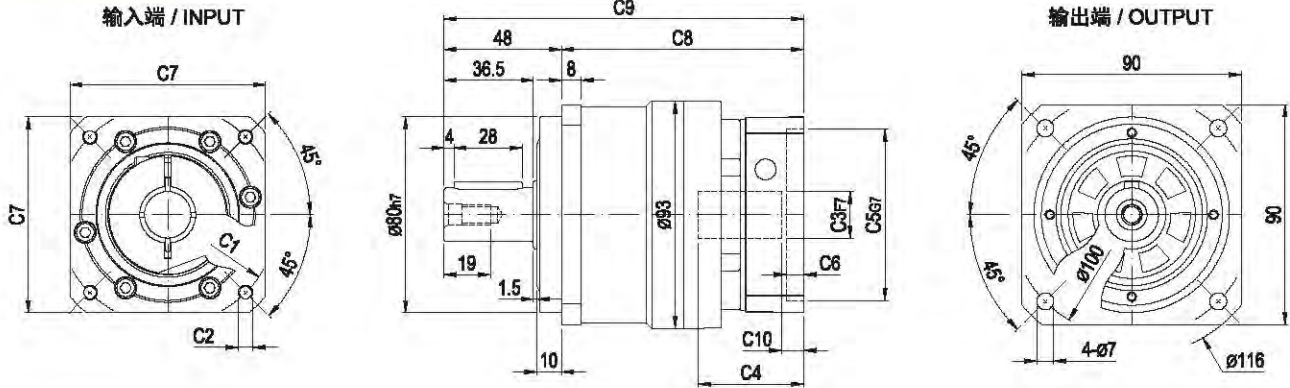


尺寸	C1	C2	C3	C4	C5	C6	C7	C8	C9	C10
MYB-060-L1	$\phi 66.7$	4-M4x12	$\phi 8$	34	$\phi 38.1$	5.5	60	81.5	118.5	7
	$\phi 70$	4-M4x12, 4-M5x12	$\phi 11, \phi 14$	34	$\phi 50$	5.5	60	81.5	118.5	7
	$\phi 90$	4-M5x15, 4-M6x15	$\phi 19$	42	$\phi 70$	7	80	90.5	127.5	9
MYB-060-L2	$\phi 66.7$	4-M4x12	$\phi 8$	34	$\phi 38.1$	5.5	60	110.5	147.5	7
	$\phi 70$	4-M4x12, 4-M5x12	$\phi 11, \phi 14$	34	$\phi 50$	5.5	60	110.5	147.5	7
	$\phi 90$	4-M5x15, 4-M6x15	$\phi 19$	42	$\phi 70$	7	80	119.5	156.5	9

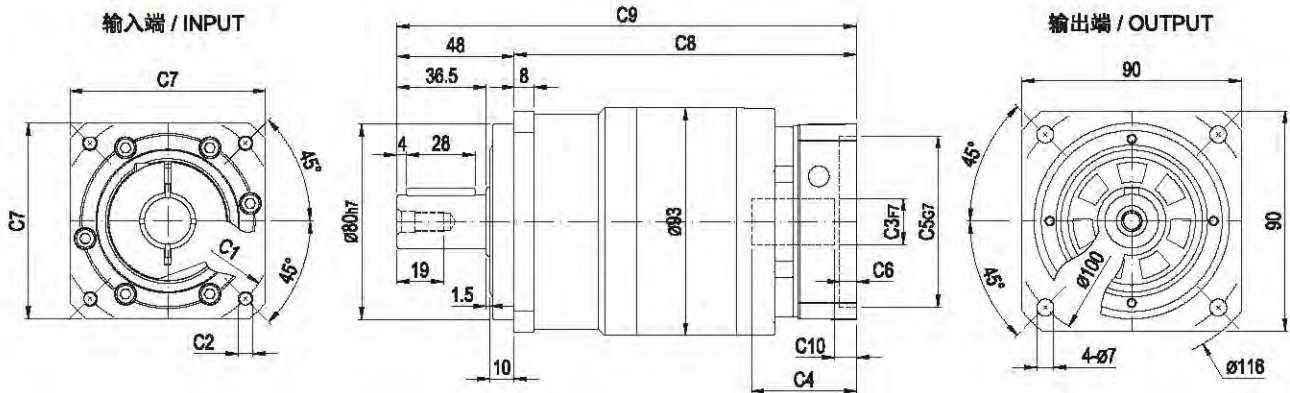
\* C1-C7是公制标准马达连接板之尺寸, 可根据客户要求单独定做。  
 \* C1-C7are motor(metric standard) specific dimensions, which could be customised.

外形尺寸图 / OUTLINE DIMENSION SHEET

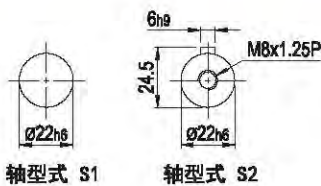
MYB-090-L1



MYB-090-L2



输出轴径 / Output Diameter



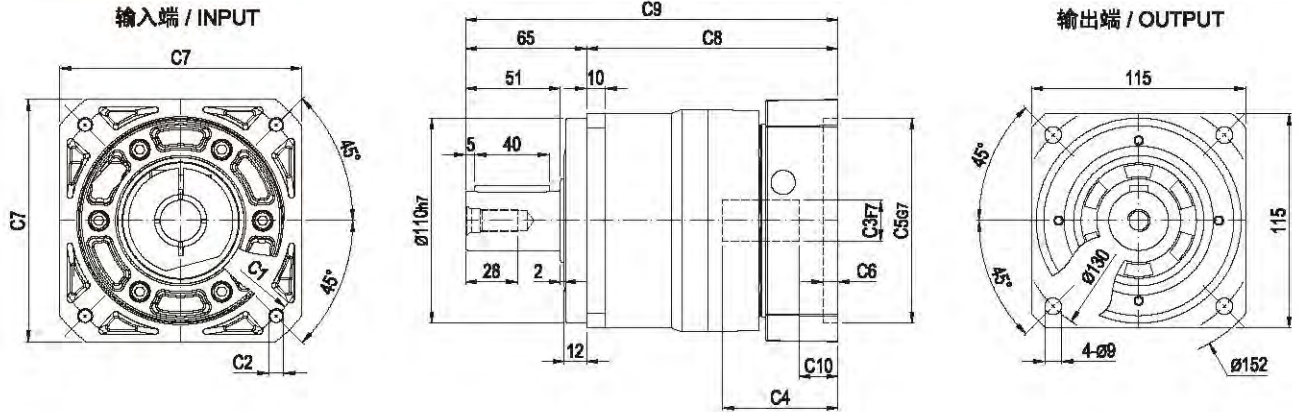
尺寸	C1	C2	C3	C4	C5	C6	C7	C8	C9	C10
MYB-090-L1	$\varnothing 90$	4-M5x15, 4-M6x15	$\varnothing 19$	43	$\varnothing 70$	7	80	99	147	9
	$\varnothing 100$	4-M6x15	$\varnothing 16, \varnothing 19$	43	$\varnothing 80$	7	86	99	147	9
	$\varnothing 115$	4-M8x20	$\varnothing 19, \varnothing 22, \varnothing 24$	56.5	$\varnothing 95$	10	100	115.5	163.5	17.5
	$\varnothing 145$	4-M8x20	$\varnothing 19, \varnothing 22, \varnothing 24$	60	$\varnothing 110$	8	130	119	167	21
MYB-090-L2	$\varnothing 90$	4-M5x15, 4-M6x15	$\varnothing 19$	43	$\varnothing 70$	7	80	140	188	9
	$\varnothing 100$	4-M6x15	$\varnothing 16, \varnothing 19$	43	$\varnothing 80$	7	86	140	188	9
	$\varnothing 115$	4-M8x20	$\varnothing 19, \varnothing 22, \varnothing 24$	56.5	$\varnothing 95$	10	100	156.5	204.5	17.5
	$\varnothing 145$	4-M8x20	$\varnothing 19, \varnothing 22, \varnothing 24$	60	$\varnothing 110$	8	130	160	208	21

\* C1-C7是公制标准马达连接板之尺寸, 可根据客户要求单独定做。

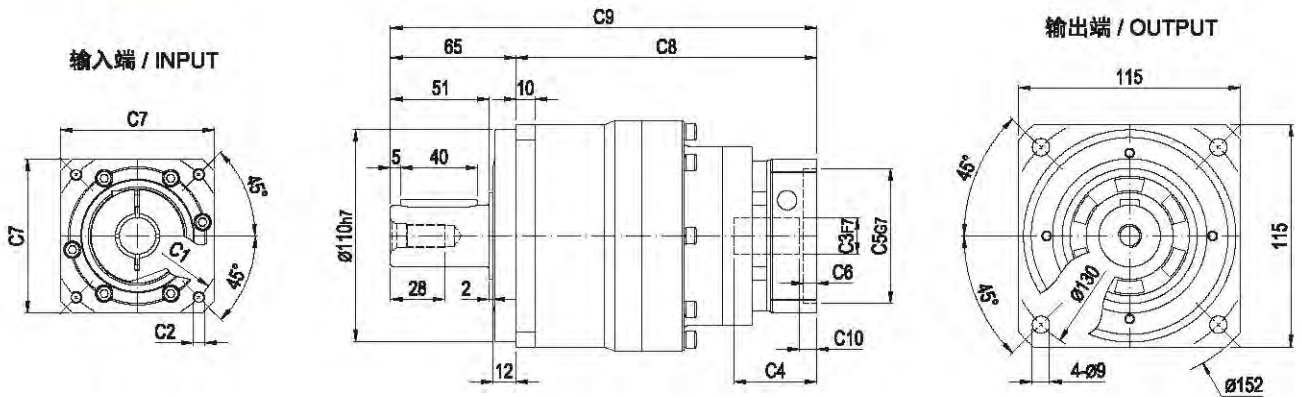
\* C1-C7 are motor (metric standard) specific dimensions, which could be customised.

外形尺寸图 / OUTLINE DIMENSION SHEET

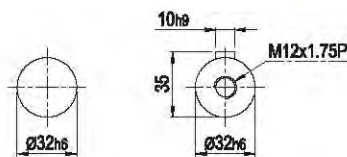
MYB-115-L1



MYB-115-L2



输出轴径 / Output Diameter



轴型式 S1

轴型式 S2

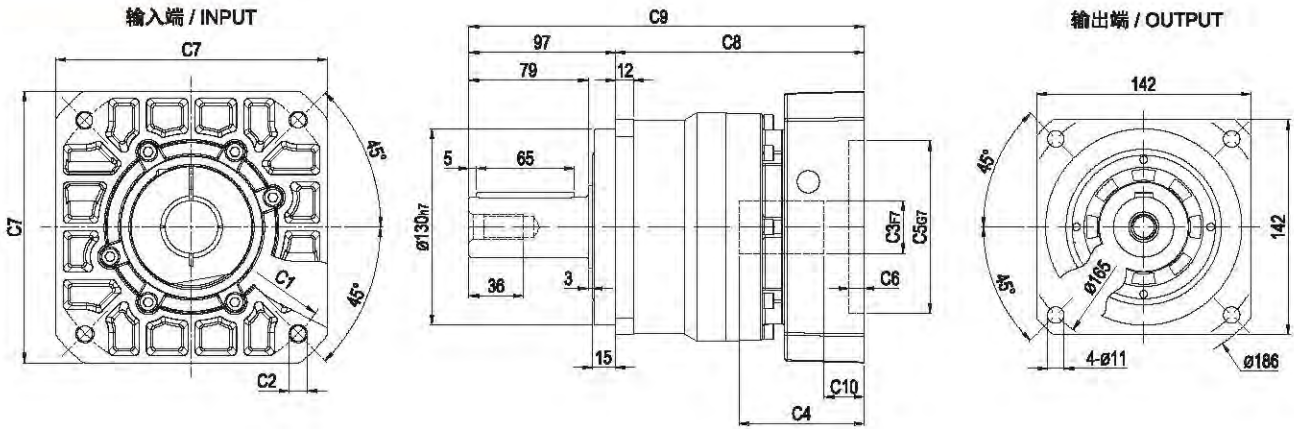
尺寸	C1	C2	C3	C4	C5	C6	C7	C8	C9	C10
MYB-115-L1	ø145	4-M8x20	ø19,ø22,ø24	62	ø110	8	130	135	200	21
	ø200	4-M12x30	ø35	82	ø114.3	10	180	155	220	28
MYB-115-L2	ø90	4-M5x15, 4-M6x15	ø19	43	ø70	7	80	156	221	9
	ø100	4-M6x15	ø16,ø19	43	ø80	7	86	156	221	9
	ø115	4-M8x20	ø19,ø22,ø24	56.5	ø95	10	100	172.5	237.5	17.5
	ø145	4-M8x20	ø19,ø22,ø24	60	ø110	8	130	176	241	21

\* C1~C7是公制标准马达连接板之尺寸, 可根据客户要求单独定做。

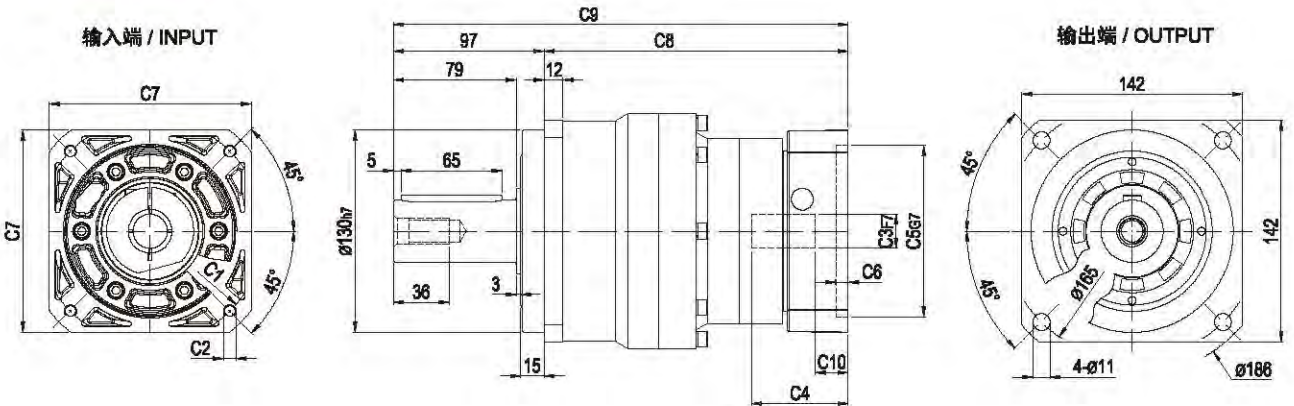
\* C1~C7 are motor(metric standard) specific dimensions, which could be customised.

外形尺寸图 / OUTLINE DIMENSION SHEET

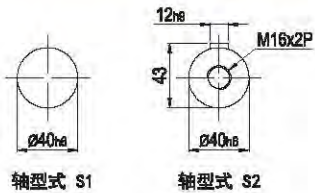
MYB-142-L1



MYB-142-L2



输出轴径 / Output Diameter

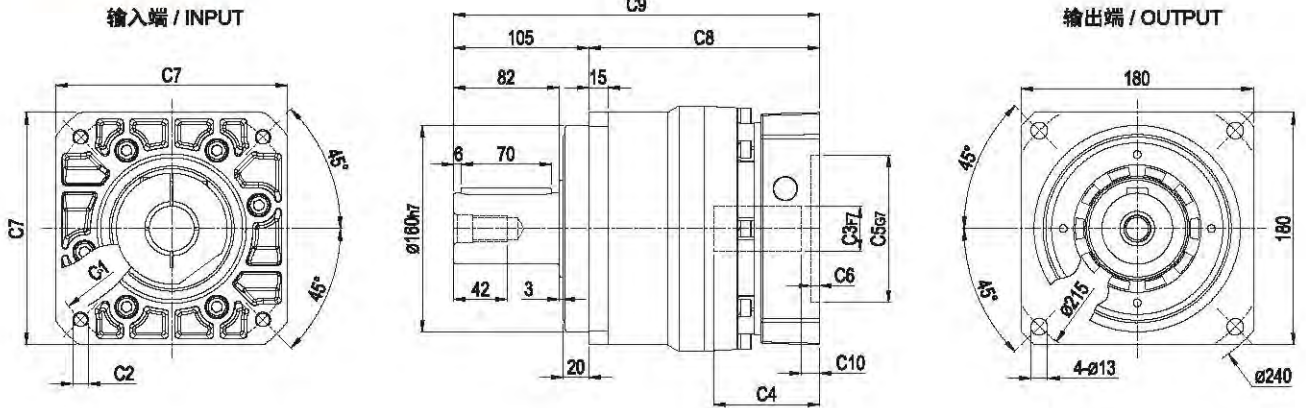


尺寸	C1	C2	C3	C4	C5	C6	C7	C8	C9	C10
MYB-142-L1	Ø145	4-M8x20	Ø22,Ø24	72	Ø110	10	130	154	251	20.5
	Ø200	4-M12x30	Ø35	83	Ø114.3	10	180	165	262	26.5
MYB-142-L2	Ø145	4-M8x20	Ø19,Ø22,Ø24	82	Ø110	8	130	195.5	292.5	21
	Ø200	4-M12x30	Ø35	82	Ø114.3	10	180	215.5	312.5	28

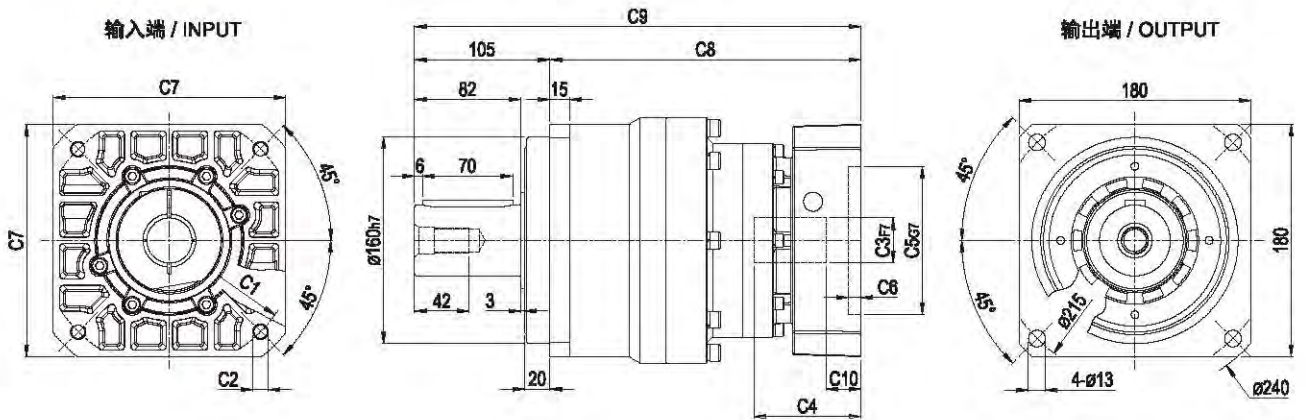
\* C1~C7是公制标准马达连接板之尺寸, 可根据客户要求单独定做。  
 \* C1~C7 are motor(metric standard) specific dimensions, which could be customised.

外形尺寸图 / OUTLINE DIMENSION SHEET

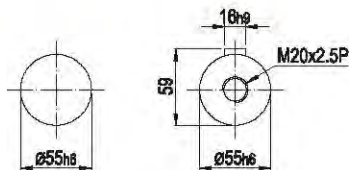
MYB-180-L1



MYB-180-L2



输出轴径 / Output Diameter



轴型式 S1

轴型式 S2

尺寸	C1	C2	C3	C4	C5	C6	C7	C8	C9	C10
MYB-180-L1	$\varnothing 200$	4-M12x30	$\varnothing 35$	82	$\varnothing 114.3$	7	180	179	284	14
	$\varnothing 235$	4-M12x30	$\varnothing 42$	120	$\varnothing 200$	10	220	217	322	44
MYB-180-L2	$\varnothing 145$	4-M8x20	$\varnothing 22, \varnothing 24$	72	$\varnothing 110$	10	130	230	335	20.5
	$\varnothing 200$	4-M12x30	$\varnothing 35$	83	$\varnothing 114.3$	10	180	241	346	26.5

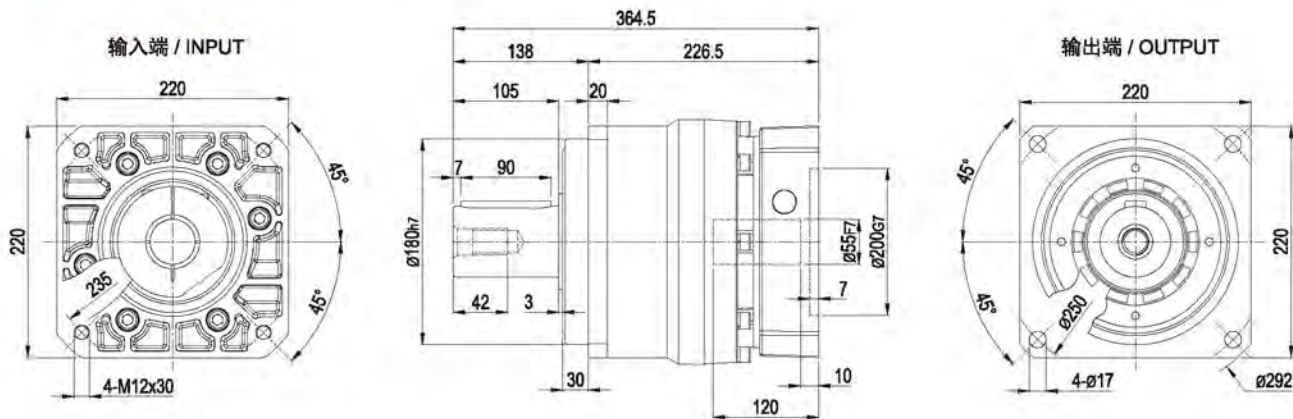
\* C1-C7是公制标准马达连接板之尺寸, 可根据客户要求单独定做。

\* C1-C7 are motor(metric standard) specific dimensions, which could be customised

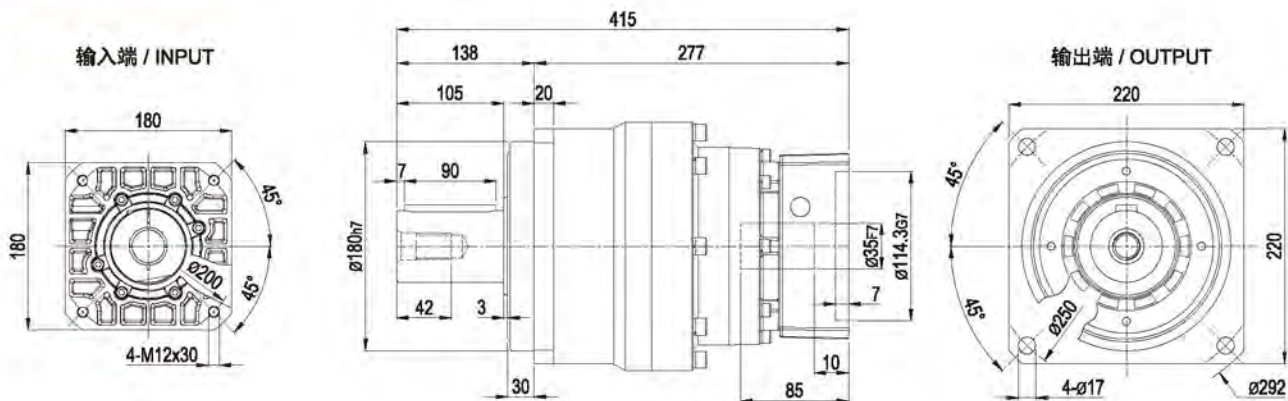


外形尺寸图 / OUTLINE DIMENSION SHEET

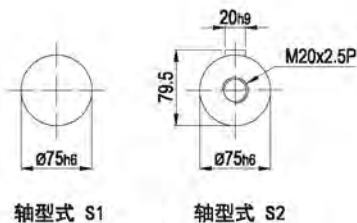
MYB-220-L1



MYB-220-L2



输出轴径 / Output Diameter



\*输入马达连接板之尺寸, 可根据客户要求单独定做。  
\*The input motor specific dimensions could be customised.